

OLG Church Highlights – The Numbers

(July 1, 2024 – June 30, 2025)

- OLG Registered Families – Approximately 1629
- New Families Registered – 205
- Baptisms – 64
- First Communion & Reconciliation – 82
- Weddings – 22
- Quinceañera – 7
- Funerals – 27
- Confirmed – 56 (includes Adults & Youth)
- Guadalupe Youth Ministry (GYM) Enrollment – 95
- Children and Family Evangelization (CAFÉ) Enrollment – 79
- Exceeded ADLA Together-In-Mission Goal, excess contributions came back to OLG



*Due to Your Time, Treasure & Talent...
Our Church Continues to Serve the Community Doing God's Work*

OLG School Highlights – The Numbers

(July 1, 2024 – June 30, 2025)

- **School Enrollment – 250** (stable enrollment with waitlists in most grades)
- **New Families/Students in the school – 30 Families/32 Students**
- **Niland Trust Tuition Aid Recipients – 22 Families/18 Students**
- **Preschool Enrollment – 21**
- **2025 Graduates – 31**
- **2025 Summer School Enrollment - 60**
- **2025 Summer Camp Enrollment – 61**
- **Students participating in CYO sports – 70**
- **Performing Arts After School Enrichment -- 54**
- **Students enrolled in before/after school care – 72**
- **Vibrant Junior High Servant Leadership Programs**
- **Award Winning First Lego League Robotics Teams**
- **2025 100% acceptance rate to Catholic high schools**
 - Graduates earned multiple honors at entrance for High School



Our School Is Financially Stable & Continues to Nurture The Next Generation of OLG Catholic Scholars

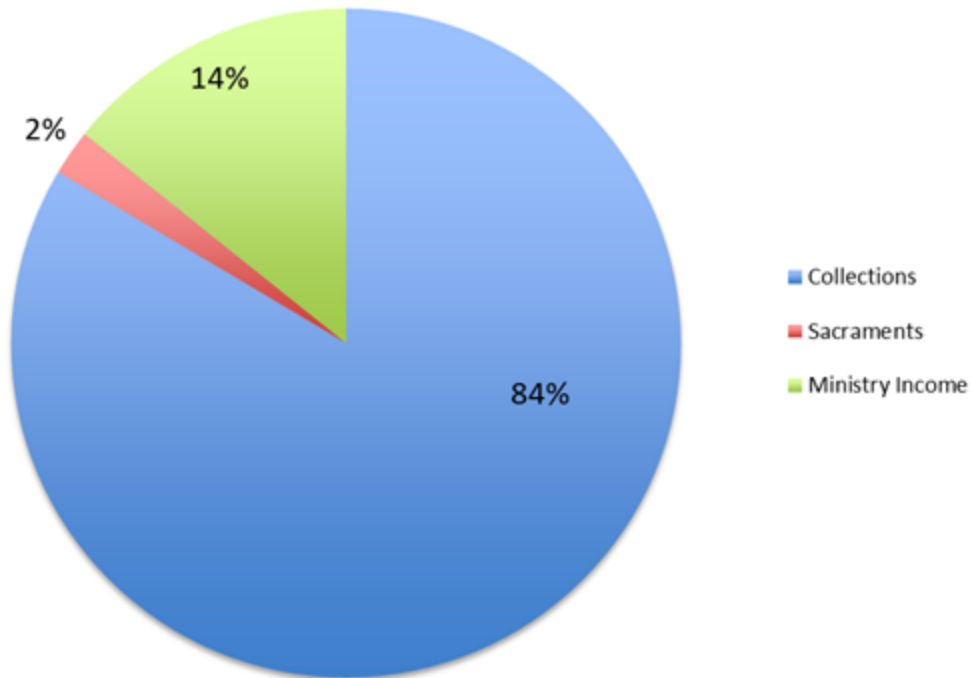
OLG Niland Trust Fund

- **History & Charter** – In 2005, Long Time Parishioner **Billyanne Niland** left a generous sum of money to support the Catholic educational needs of the **“Children of OLG”** whose families may need financial help to provide their children with a Catholic education.
- **Administrative Process** – Monies are invested by ADLA. Distribution requests are reviewed & approved by the **OLG Niland Fund Board of Directors**
- **Distributions - FY 2024-25**
 - **Need Based OLG School Tuition** - 18 students
 - **Catholic High School Scholarships** – 6 OLG 8th grade students have received \$500.00 - \$1,000.00
 - **OLG Youth Ministry** – Funds have supported Religious Education & Youth Retreats
- Thanks to a few generous Niland Trust Fund donors and a *“very friendly stock market”* the Niland Fund continues to be able to support Mrs. Niland’s vision of *“helping the needy children of OLG”* with their Catholic education”
 - **Donations are strongly encouraged & much appreciated**
 - There are three ways to make a contribution to the Niland Trust Fund: *use the envelopes in the church pews; deliver a check to the parish office made out to Our Lady of Guadalupe Church with Niland Fund in the memo; or donate online via WeShare*

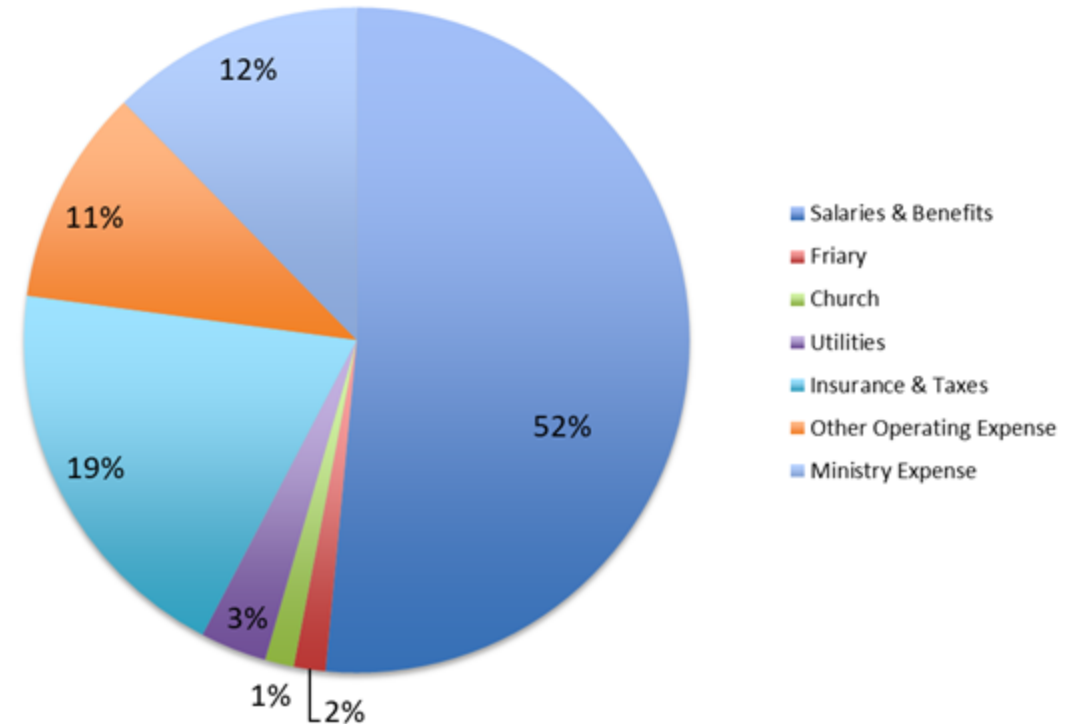
By Contributing to the Niland Trust Fund, You Are Helping To Continue Mrs. Niland’s Vision of Providing A Catholic Education To OLG Children Whose Families May Need Financial Assistance

OLG Church 2024 -2025 Income / Expense Categories

Our Lady of Guadalupe
Fiscal Year Ended June 30, 2025
Income Sources - Total Income = \$985,496

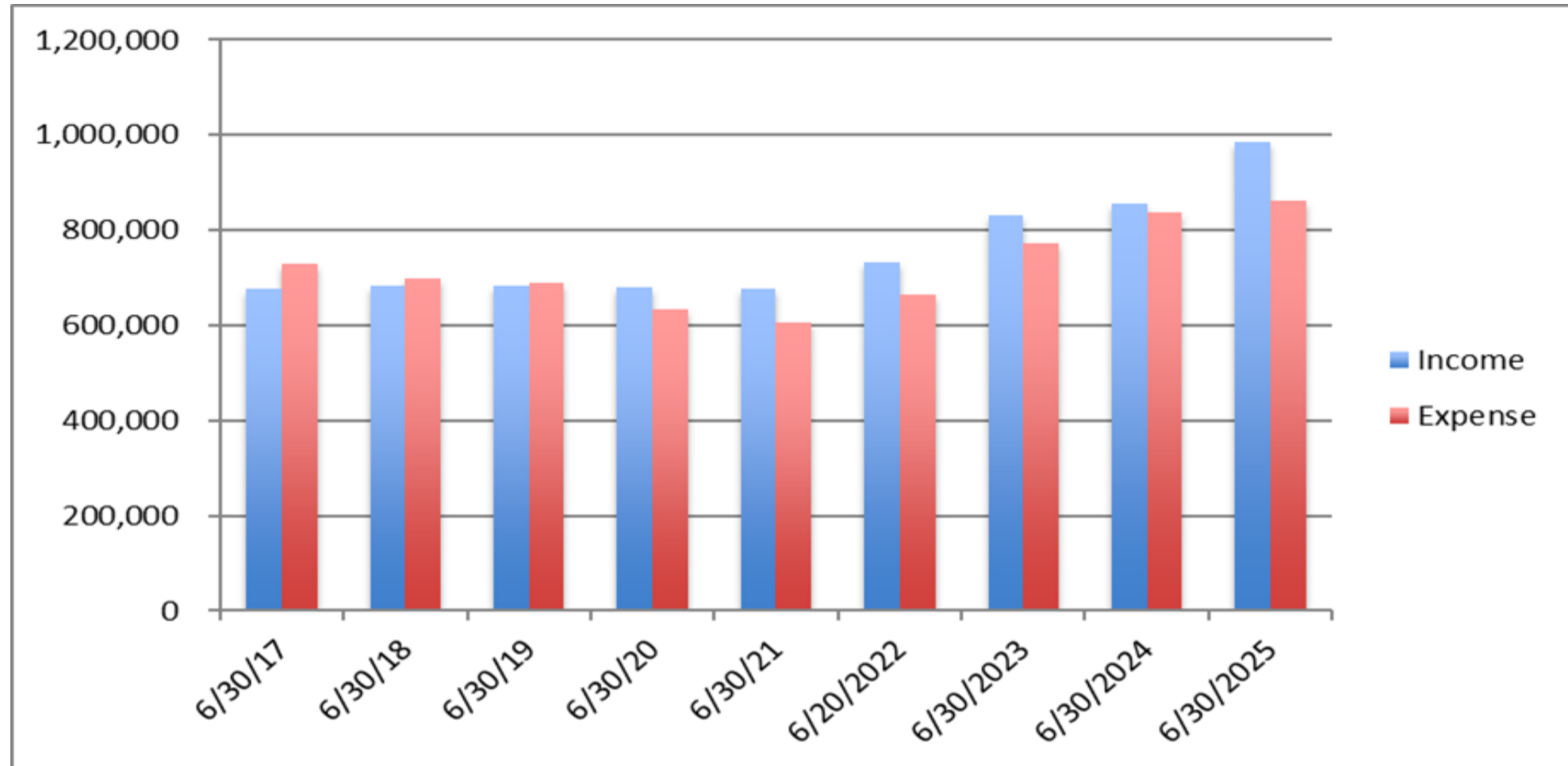


Our Lady of Guadalupe
Fiscal Year Ending June 30, 2025
Expense Categories - Total Expense = \$862,002



Because of Your Generosity & Sound Financial Management, the Parish Finished with a Positive Cash Flow of \$123,500.

OLG Church 2017 – 2025 Annual Income vs Annual Expenses



OLG parishioners generous donations allowed us to address a number of facility projects and expand ministries resulting in increased expense