

OLG Church Highlights – The Numbers

(July 1, 2023 – June 30, 2024)

- **OLG Registered Families – Approximately 1457**
- **New Families Registered in 2023 - 118**
- **Baptisms – 51**
- **First Communion & Reconciliation – 85**
- **Weddings – 12**
- **Quinceañera – 11**
- **Funerals – 24**
- **Confirmed – 45 (107 currently enrolled in Youth Ministry - GYM)**
- **Children and Family Evangelization (CAFÉ) Enrollment – 86**
- **Exceeded ADLA Together-In-Mission Goal, excess contributions came back to OLG**
- **ADLA Call to Renew Campaign – 111% of \$560,000 goal! (Excess funds to be used for Evangelization ministries and facility needs)**
- **Building-Our-Faith Capital Campaign**
 - 100% Pledged
 - Now Debt Free with Loan Repayment of \$562,000



*Due to Your Time, Treasure & Talent...
Our Church Continues to Serve the Community Doing God's Work*

OLG School Highlights – The Numbers

(July 1, 2023 – June 30, 2024)

- **School Enrollment – 240** (stable enrollment with waitlists in most grades)
- **New Families/Students In the school – 15 Families/18 Students**
- **Niland Trust Tuition Aid Recipients – 18 families/22 students**
- **Pre-School Enrollment – 18**
- **2024 Graduates – 23**
- **2024 Summer School Enrollment - 65**
- **2024 Summer Camp Enrollment – 51**
- **Students participating in CYO sports – 65**
- **Performing Arts After School Enrichment -- 62**
- **Students enrolled in before/after school care – 65**
- **Vibrant Junior High Servant Leadership Programs**
- **Award Winning First Lego League Robotics Teams**
- **2024 100% acceptance rate to Catholic high schools**
 - **Graduates earned multiple honors at entrance for High School**



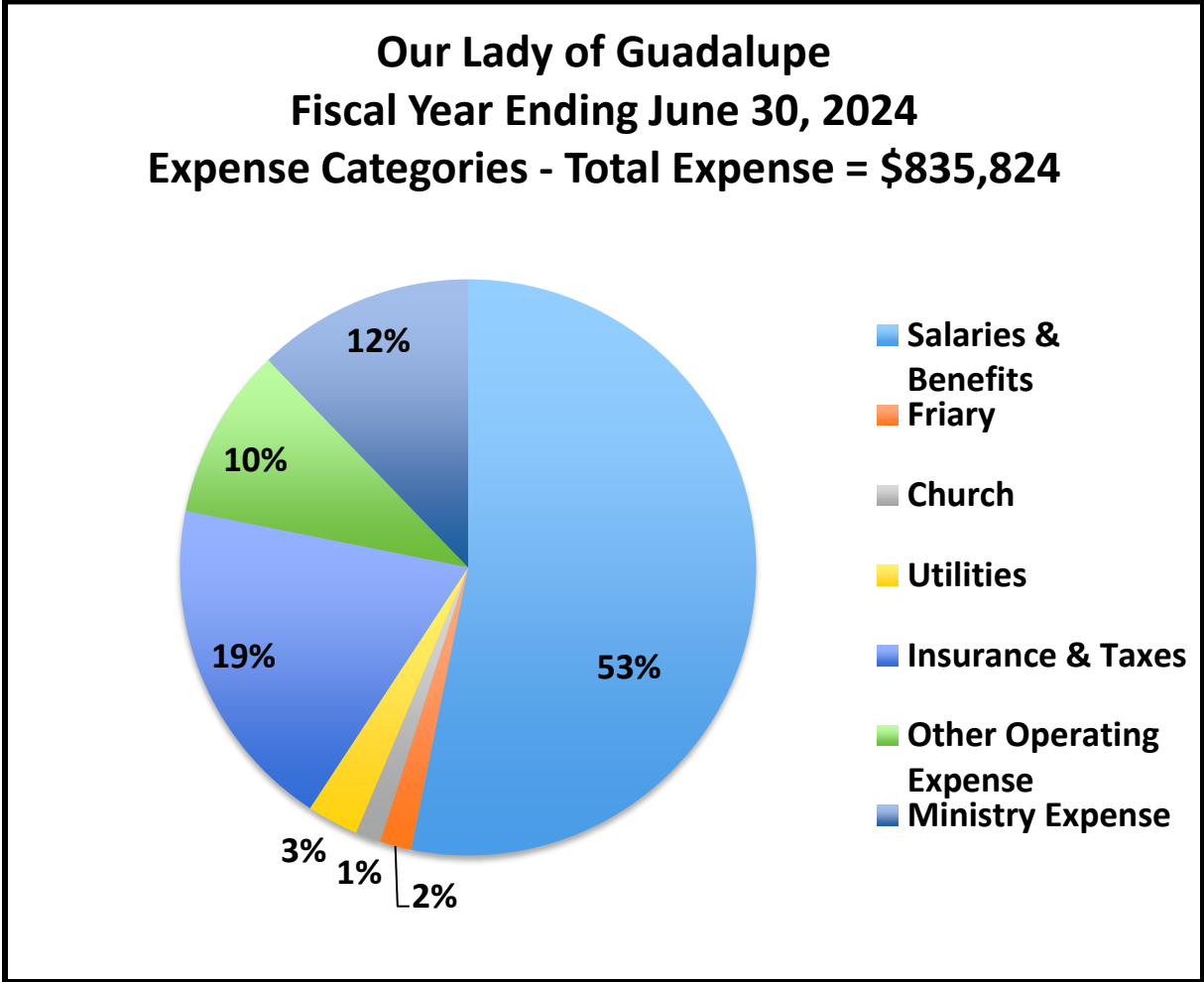
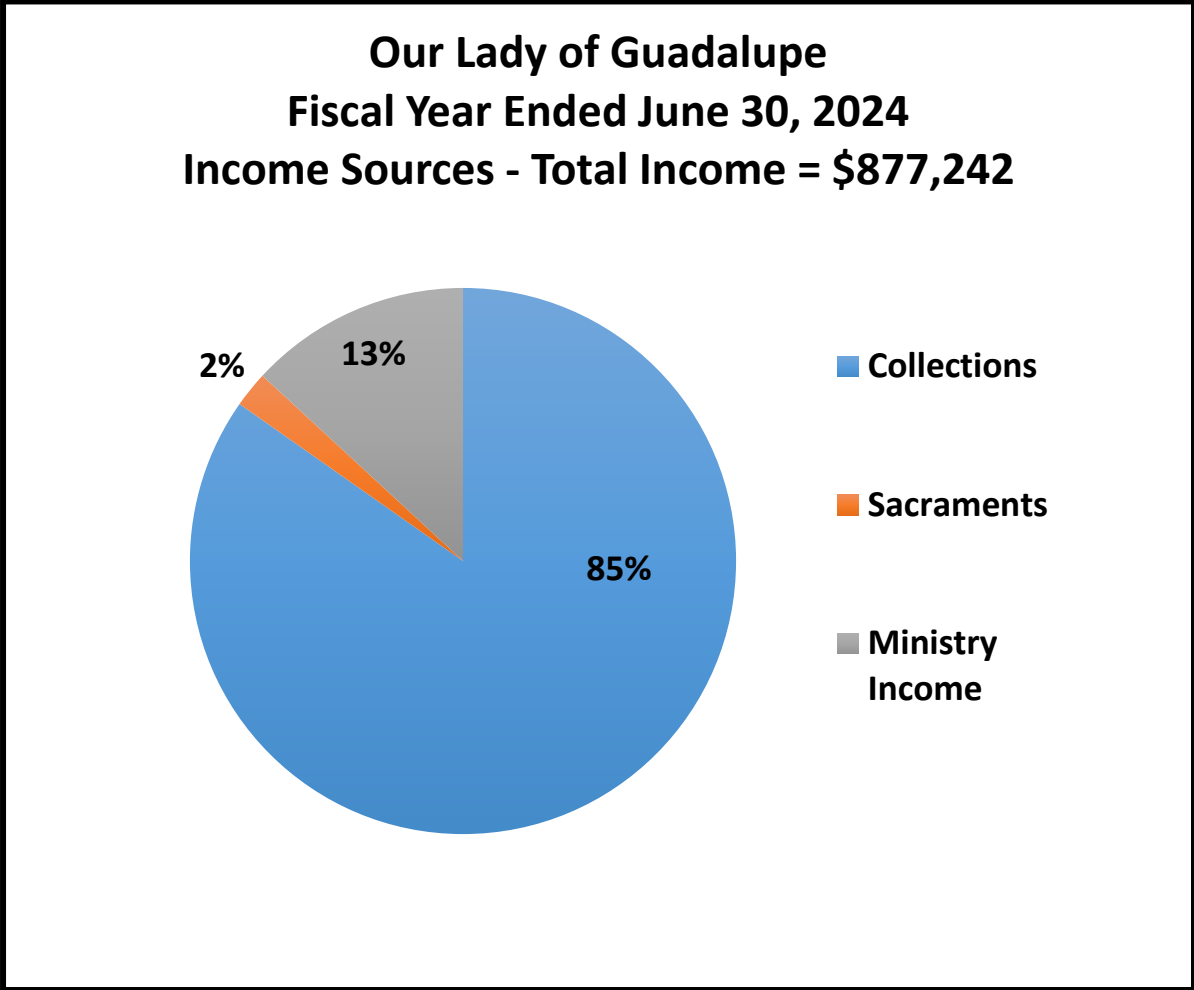
Our School Is Financially Stable & Continues to Nurture The Next Generation of OLG Catholic Scholars

OLG Niland Trust Fund

- **History & Charter** – In 2005, Long Time Parishioner **Billyanne Niland** left a generous sum of money to support the Catholic educational needs of the **“Children of OLG”** whose families may need financial help to provide their children with a Catholic education.
- **Administrative Process** – Monies are invested by ADLA. Distribution requests are reviewed & approved by the **OLG Niland Fund Board of Directors**
- **Distributions - 2005–2024**
 - **Need Based OLG School Tuition** - 654 students/640 families
 - **Catholic High School Scholarships** – 19 OLG 8th grade students have received \$500.00 - \$1,000.00
 - **OLG Youth Ministry** – Funds have supported Religious Education & Youth Retreats
- Thanks to a few generous Niland Trust Fund donors and a *“very friendly stock market”* the Niland Fund continues to be able to support Mrs. Niland’s vision of *“helping the needy children of OLG”* with their Catholic education”
 - **Donations are strongly encouraged & much appreciated**
 - There are three ways to make a contribution to the Niland Trust Fund: *use the envelopes in the church pews; deliver a check to the parish office made out to Our Lady of Guadalupe Church with Niland Fund in the memo; or donate on-line via WeShare*

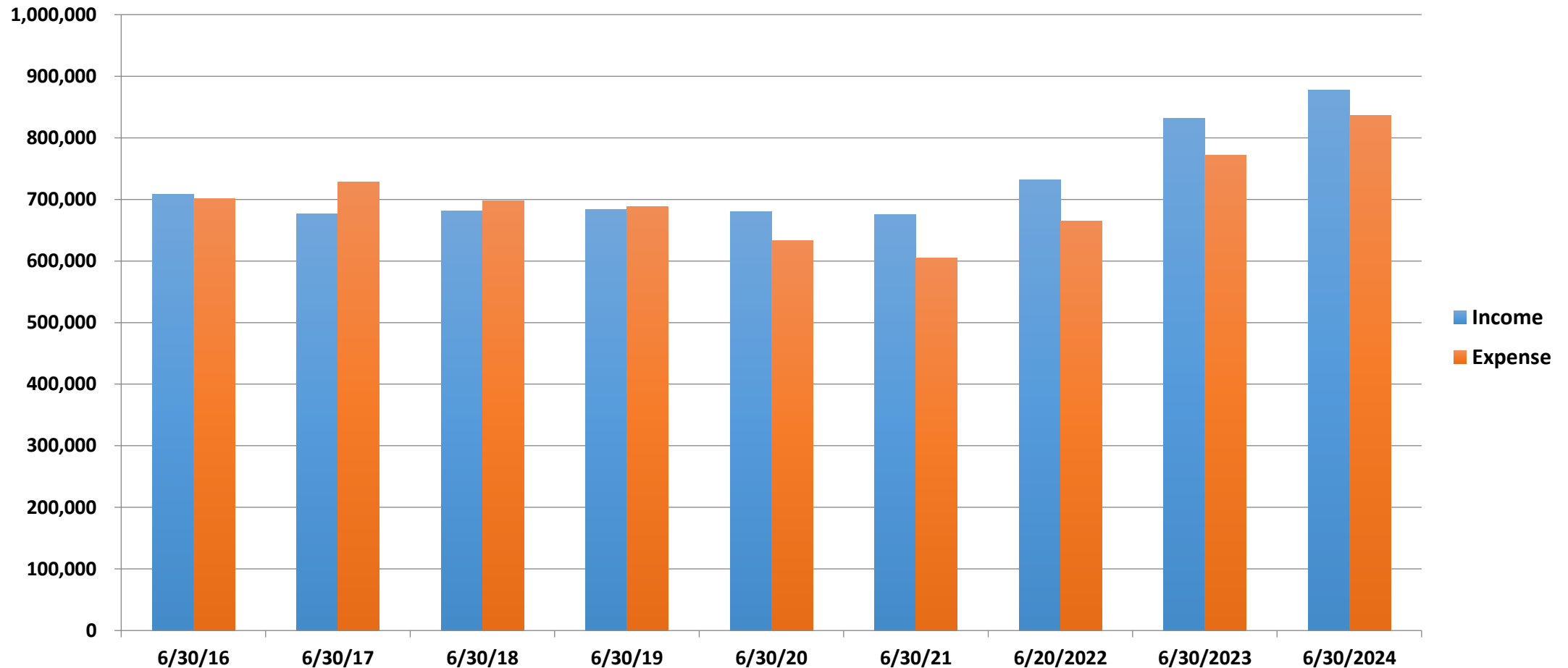
By Contributing to the Niland Trust Fund You Are Helping To Continue Mrs. Niland’s Vision of Providing A Catholic Education To OLG Children Who’s Families May Need Financial Assistance

OLG Church 2023 -2024 Income / Expense Categories



Because of Your Generosity & Sound Financial Management, the Parish Finished with a Positive Cash Flow of \$41,418

OLG Church 2016 – 2024 Annual Income vs Annual Expenses



OLG parishioners generous donations allowed us to address a number of facility projects and expand ministries resulting in increased expense